



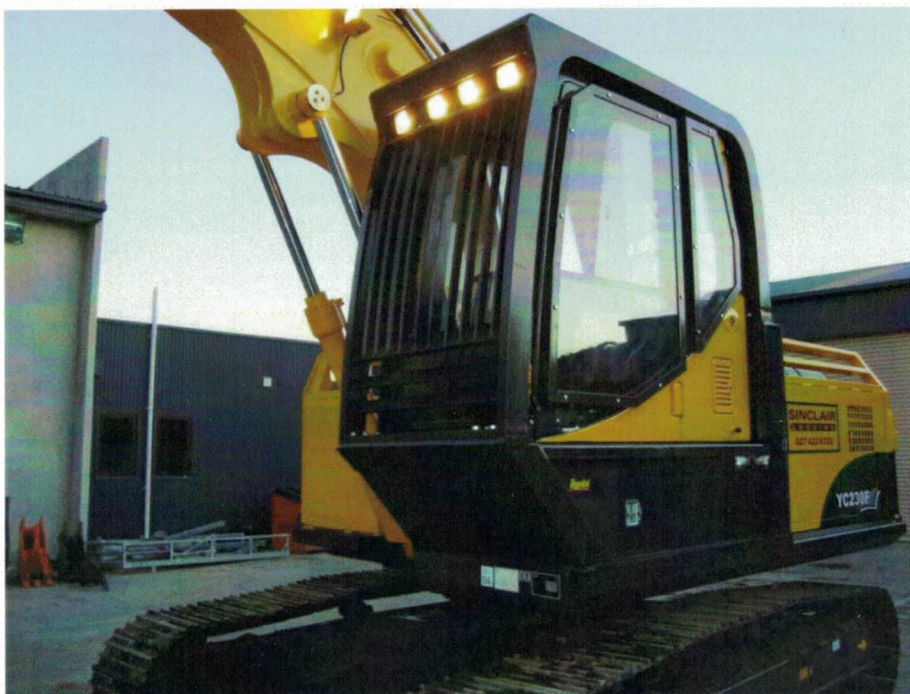
Yuchai YC 230-8 Excavator	Units	
Machine Weight	Kg	23000 (Machine Only)
Bucket Volume	m ³	1.05
Engine		Cummins B5.9C
Power of engine	KW/rpm	116 @2000
Overall Length (Trans pos)	mm	9565
Overall Height (Trans pos)	mm	3000
Width of Undercarriage	mm	2990
Width of Track	mm	600
Maximum Platform Tail Turning Radius	mm	3424
Length of Track	mm	4446
Distance Btn Platform and Ground	mm	1040
Travelling Speeds	Km/h	2.9 / 4.9
Maximum Digging Height	mm	9680 Adjustable with boom lift
Maximum Dumping Height	mm	6770
Maximum Digging Depth	mm	6645
Maximum Digging Force	kN	145
		Computer Free

YUCHAI



KYB
Our Precision, Your Advantage

Diggalink



The Yuchai YC230-8 LCF is a robust excavator, powerful and smooth in operation with an extremely strong robust frame, undercarriage & long track base.

The YC230-8 operates a Cummins B5.9C Diesel Engine, KPM Hydraulic pump, and KYB Travel motors and is computer free.

Yuchai excavators are proving their worth in some of the toughest operating environments and are very suited to the forestry and farming industries.

Yuchai is backed with a Yuchai factory warranty and after sales support from Diggalink New Zealand wide