

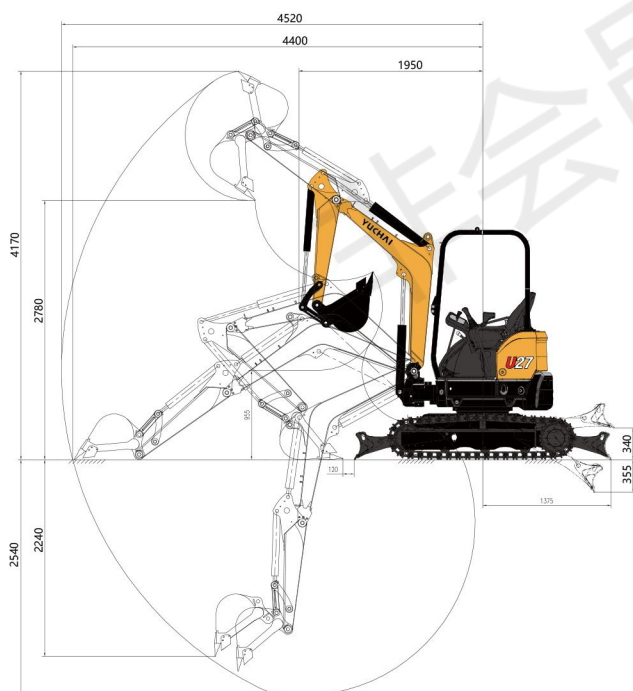
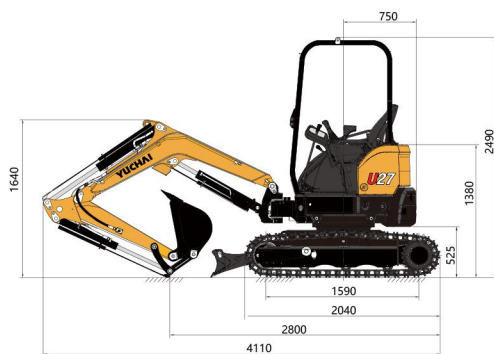


U27

CE

Total Weight:	2600 kg
Standard bucket capacity:	0.09 m ³
Rated power:	14.5/2400 kW/rpm

- Euro V engine (Yanmar engine)
- Load sensitive hydraulic system
- Superior working efficiency
- Low fuel consumption
- Standard with Rubber Tracks



► Technical Specification

Basic parameter

Machine weight	2600 kg
Bucket capacity	0.09 m ³
Width of bucket	510 mm

Performance parameter

Engine model	YANMAR
Engine power	14.5/2400 kW/rpm
Max. Gradeability	30 °
Max. digging force of arm	14.4 kN
Max. digging force of bucket	23.1 kN
Traveling speed	4.2/2.3 km/h
Slewing speed of platform	10~12 rpm

Operating parameter

Max.digging height	4170 mm
Max.digging depth	2540 mm
Max.digging radius	4520 mm
Max.digging radius on ground level	4400 mm
Max.dumping height	2780 mm
Min.slewing radius	1950 mm
Max.vertical digging depth	2240 mm

Transportation dimension

Overall length	4110 mm
Overall width	1500 mm
Overall height	2490 mm

Other Parameter

Width of undercarriage	1500 mm
Length of track	2040 mm
Width of track	250 mm
Height between undercarriage and ground	320 mm
Height between platform and ground	525 mm
Platform tail turning radius	750 mm
Track gauge	1590 mm
Fuel tank capacity	30 L
Hydraulic oil tank capacity	25 L

Guangxi Yuchai Heavy Industry Co.,Ltd.

Address:No.168 Tianqiao Road, Yulin, Guangxi, China

Tel: +86-775-3223503

Fax:+86-775-3223503

Email: dig@yuchai.cn, ychi-export@yuchai.cn

Website:www.yuchaihi.com

Alibaba Website: www.yuchaihi.en.alibaba.com

Specifications are subject to change without prior notice